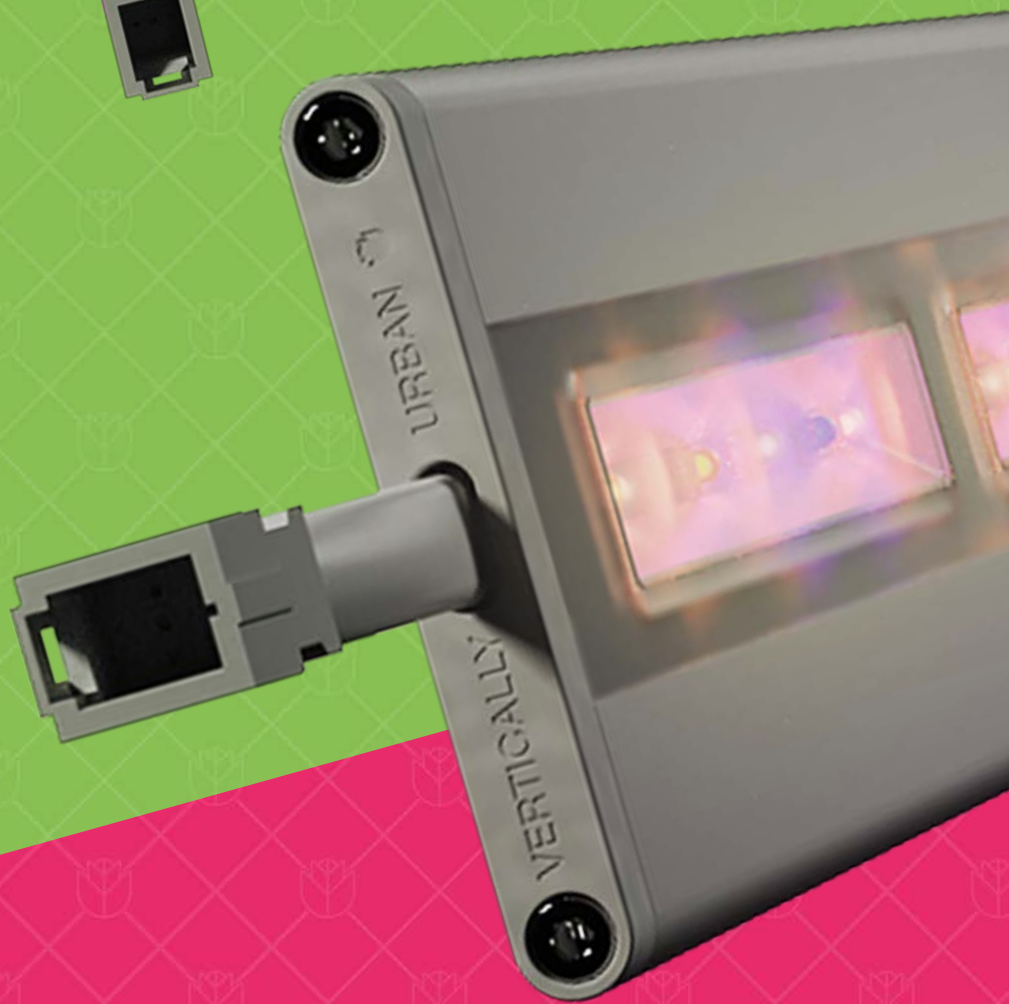


HORTI-BLADE™ TUNABLE



VERTICALLY
URBAN

LIGHTING THE FARMS OF THE FUTURE



A VERSATILE ULTRA-SLIM LED GROW
LIGHT WITH A TUNABLE SPECTRUM

For Research & Multi-Crop Applications



+44 (0)113 322 6459



hello@verticallyurban.com



verticallyurban.com

VERTICALLY URBAN | Typhoon House, Moxon Way, Leeds, West Yorkshire, LS25 6FB, United Kingdom



V.U.031/025

© 2023 Vertically Urban Limited. All rights reserved.
Information provided is subject to change without prior notice.

HORTI-BLADE™ TUNABLE



A uniquely versatile luminaire, Horti-Blade™ Tunable features a fully tunable spectrum engineered in to the same ultra low-profile of its fixed spectrum counterparts.

Four individually controlled, fully dimmable channels, allow each section of the output spectrum to be precisely tuned, via our custom Spectra Drive* controller, to the needs of your crop.

Horti-Blade™ Tunable is perfect for research applications, or where a wide variety of crops needs to be catered for.

ENGINEERED

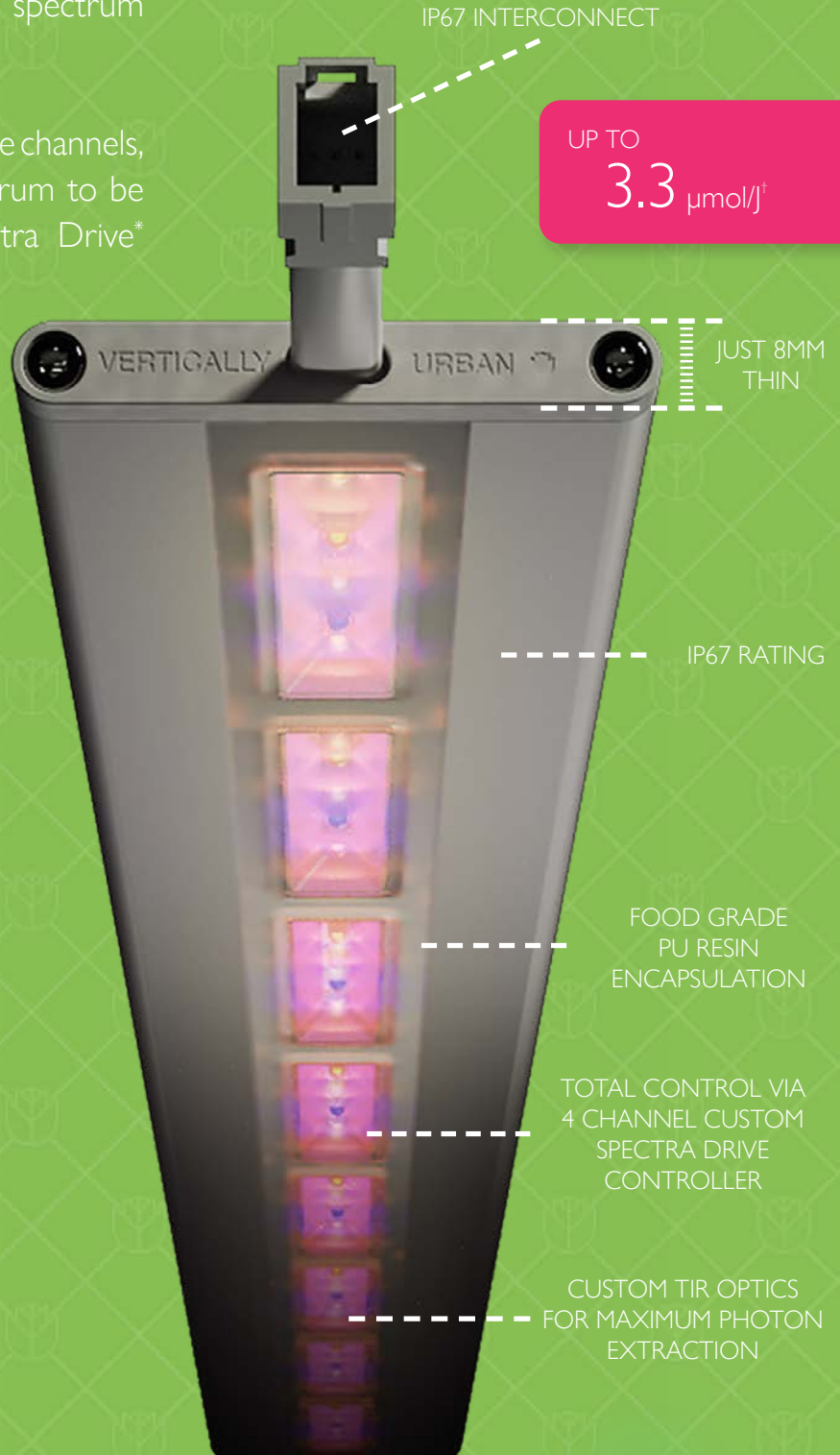
- Ultra low-profile design
- Optimum photon extraction technology
- Designed and made in Britain

RUGGED

- Ingress protected to IP67
- A robust aluminium housing
- Fully PU encapsulated technology

TUNABLE

- Fully tunable spectrum
- 4 channel control via Spectra Drive
- Variable efficacies up to 3.3 $\mu\text{mol/J}^{\dagger}$

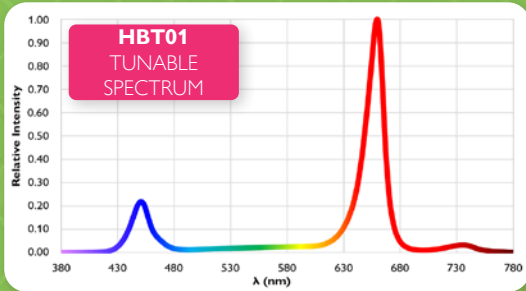


*See additional 'Spectra Drive' datasheet for details.
†With red channel only set to 100%.

HORTI-BLADE™ TUNABLE



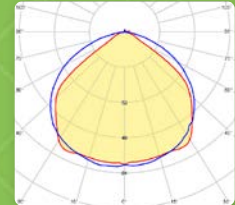
TUNABLE SPECTRUM



SPECTRUM PHOTON DISTRIBUTION

	HBT01
BLUE PF	22%
GREEN PF	8%
RED PF	65%
FAR RED PF	5%

LIGHT DISTRIBUTION



Spectral information shown is with all channels set to 100%. The spectrum and photon distribution will vary according to the settings used.

SPECIFICATIONS & PRODUCT CODES

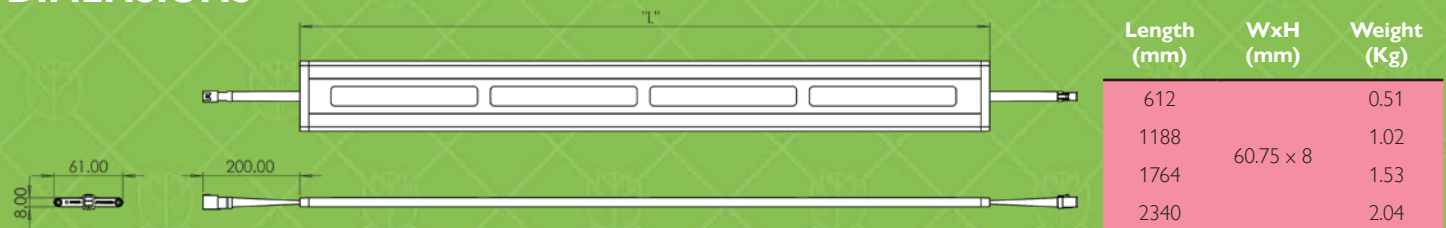
PSU Input Voltage	~90-305 VAC (actual value PSU dependant)	IP Rating	IP67 (Horti-blade)
Control Input	Modbus RTU or DMX	Storage Temp	-30° to 85°C
PSU Power Factor	>0.95	Operating Temp	0° to 40°C
Dimming Range	0% - 100%	Warranty	5 Year limited
Cooling	Passive	IK Rating	3
Beam Distribution	118°	Cable Exit	End
System Certifications	CE, UKCA	Finish	Anodised aluminium / PU



Part No.	Spectrum	Length (mm)	PPF (μmol/s)*	Efficacy (μmol/J)†	Compatible PSU (Part No.)	Power (W)	Input Voltage	Units per PSU
014854	HBT01	612	54	2.7	013998 + 012252	20	48VDC	1-9
014855		1188	108			40		1-4
014856		1764	162			60		1-3
014857		2340	216			80		1-2

*With all channels set to maximum. Values may vary by +/-10%. Actual PPF values will depend on the settings used.
†With all channels set to maximum. Actual efficacy achieved will depend on the settings used.

DIMENSIONS



ACCESSORIES

Part No.	Description	Qty
012671	Tunable Spectrum 2m Input Cable & Terminator	1
012444	Sprung Steel Fixing Clip	1
016220	Vertical Mounting (Basket) Clip	1
012252	Spectra Drive Controller (DMX)	1
015138	Spectra Drive Controller (MODBUS)	1
013998	240W 48V Power Supply for Spectra Drive	1

In addition to the luminaire, a complete Horti-Blade Tunable installation requires a Spectra Drive (012252 or 015138), 48VDC power supply (013998), input cable (012671) and mounting clips (012444 or 016220).

Vertically Urban run regular development cycles, continuously optimising and balancing product specifications to best suit our customers. All information therefore, is intended as a guide and specifications may change on occasion without notice or announcement. Technical data is measured under controlled conditions, expected performance is within +/- 10% of advertised figures. Information provided is intended as a description of the product and shall not be used in the form of any contract.

+44 (0)113 322 6459

hello@verticallyurban.com

verticallyurban.com

VERTICALLY URBAN | Typhoon House, Moxon Way, Leeds, West Yorkshire, LS25 6FB, United Kingdom



VERTICALLY
URBAN

© 2023 Vertically Urban Limited. All rights reserved. Information provided is subject to change without prior notice.

VUP21025



VERTICALLY URBAN

LIGHTING THE FARMS OF THE FUTURE



CONTACT DETAILS

VERTICALLY URBAN

Typhoon House
Moxon Way
Leeds
West Yorkshire
LS25 6FB
United Kingdom



hello@verticallyurban.com



+44(0)113 322 6459



verticallyurban.com



© 2023 Vertically Urban Limited. All rights reserved.
Information provided is subject to change without prior notice.